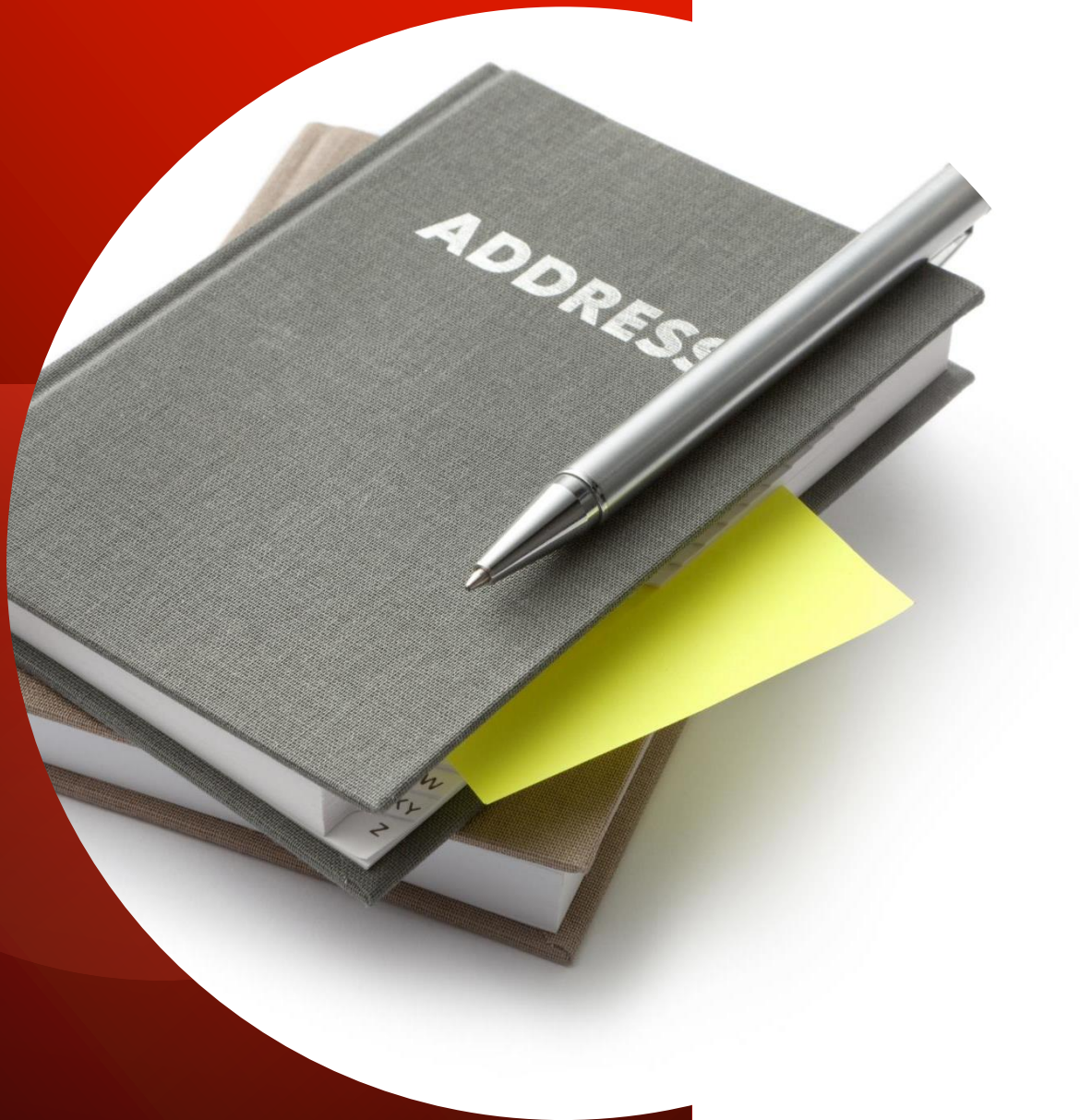


Radek Giebl, Patrik Halfar

Modern trends in Enterprise IT

(Essential steps to adopt the latest practices in startup)



Agenda

Title

Introduction RG

Enterprise IT PH

Technical Resources

Everything as a Service

Processes

Startup

Closing

Job description

Focused on business challenges, and high level enterprise-wide IT Architecture mapping of IT capabilities to business needs. The focus is on defining the relationships, flows and implementation of business (processes/activities/functions, information), applications, data and technology in the enterprise and the transitional process necessary for implementing technology in response to changing business needs.

Act as Team

- We are a team of IT architects based in Brno KCC since 2016
- We offer exclusivity and expertise in the latest IT trends
- We are a source of attraction for new customers and new service opportunities
- We share information and experience effectively
- We collaborate on solution design from an architectural perspective
- We foster mentorship and learning among IT architects
- We belong to the destination's architect community
- We have a clear and consistent team strategy

Distinctive Expertise

- Leverage technology-specific expertise to support to win deals
- **Support selling new solutions/offerings with an understanding of Kyndryl services capabilities**
- Deep technical/solution expertise for respective area
- Ensure customer satisfaction and act with integrity
- Bring together Kyndryl deep technical and solution expertise with alliance partners for jointly successful pursuits.
- Externally recognized as an expert in the technology and/or solutioning area

People

- **Invest in the development of people on the account and across Kyndryl to develop the next generation of talent**

Enterprise IT



Enterprise IT, also known as enterprise-class IT, is hardware and software designed to meet the demands of a large organization. In comparison to consumers and small companies, an enterprise has greater requirements for availability, compatibility, reliability, scalability, performance and security, among other things.

What is enterprise IT (enterprise-class IT)? -
Definition from WhatIs.com (techtarget.com)

Enterprise IT, also known as enterprise-class IT, is hardware and software designed to meet the demands of a large organization. In comparison to consumers and small companies, an enterprise has greater requirements for availability, compatibility, reliability, scalability, performance and security, among other things.

Partially true only!!!

Enterprise IT is not about technical resources only, it includes processes, documentation, controlled management and security.

What is enterprise IT (enterprise-class IT)? -
Definition from WhatIs.com (techtarget.com)

Technical
resources
as a
Service

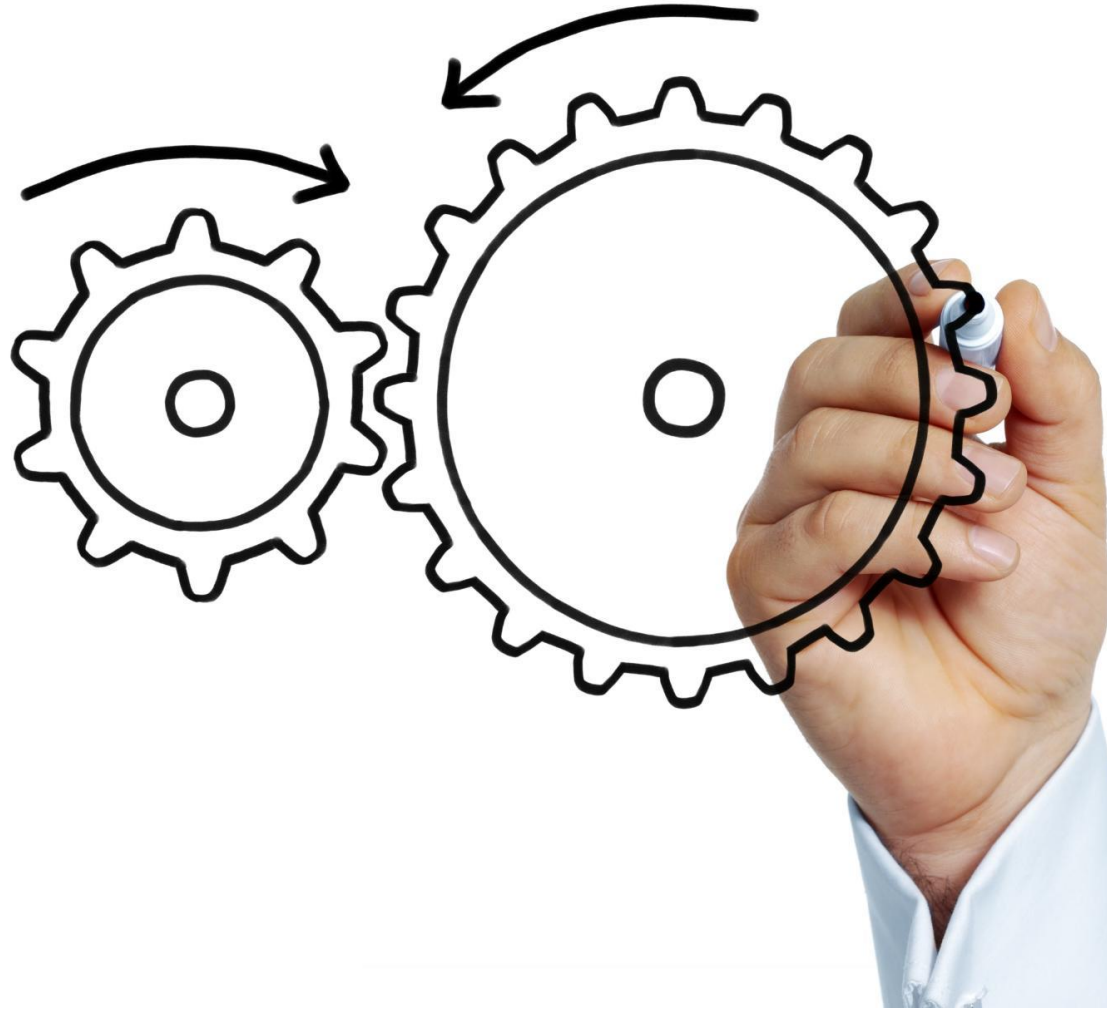


Technical resources may be realized within cloud.

-
- Service as a Service
 - Application as a Service
 - Platform as a Service
 - Server as a Service
 - Infrastructure as a Service
 - Storage as Service
 - Network as Service

Enterprise-class IT is available
to Small Business.

Processes



Well described actions and their processes over whole IT environment is crucial for business continuity and security.

-
- Architecture & design
 - Incident management
 - Change management
 - Development management
 - Road maps
 - Communication matrix
 - RACI matrix

Implementation in various level is needed by ISO Certification.

Startup

A hand is shown in the process of writing the word "STARTUP" in white chalk on a dark, textured blackboard. The word is written in a bold, slightly stylized, all-caps font. The hand is positioned on the right side of the frame, holding a piece of white chalk and is in the middle of completing the letter 'P'. The blackboard has a fine, grainy texture, and the chalk lines are bright white against the dark background.

What is startup?

"Start-up is a company designed to grow fast."

Paul Graham

“Early stage in the life cycle of an enterprise where the entrepreneur moves from the idea stage to securing financing, laying down the basis structure of the business, and initiating operations or trading.”

Businessdictionary.com

[Startup – Wikipedie \(wikipedia.org\)](https://wikipedia.org) (Czech)

Startup is a SMALL
BUSINESS

Enterprise-class IT is available
to Small Business.

Compare startup and enterprise

There are several significant differences between small business and enterprise, which has impact.

Small business

- SMB is focused to service or product delivery in short time:
- Know-how is part of individuals.
- Not strictly dedicated middle management
- Easy way how to get exception from rules.
- Flexible and open mind access to solve the issues.
- Everybody knows each other and know what they do.
- Higher limit for risk acceptance

Enterprise

- Enterprise is focused to keep business continuity:
- Know-how is owned by company.
- Processes are impersonal.
- Changes in process is run for long time.
- Exceptions from rules must be well documented and approved.
- Lower limit for risk acceptance

Success of startup

- It grows to enterprise level.
- Acquisition by company on enterprise level.

Consequences

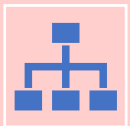


Implement middle management:

Define internal processes
Increase level of documentation
Reduce number of exceptions
Risk management



Transfer know-how from individuals to company.



Define roles and their responsibility.

Access management
Substitutability

Risks

- Lost of flexibility
- Lost of know-how.

Be prepare to grows and become enterprise class company

Consult the necessary steps with enterprise architect from start (or with first signs of success):

- Find the balance between flexibility and process workflow
- Implement security as a basic properties of everything within company
- Identify the crucial elements of product/service
- Implement basics of business management

Closing



QUESTIONS?